



Leigh Academy
RAINHAM

Chromebook Launch Event

15th September 2022



Dream
Believe
Achieve

Vision 2030

Modern lifestyles

are destroying our planet, increasing inequality and impacting mental health. We will develop resilient learners who feel empathy, act compassionately and behave ethically. We will create pioneering social entrepreneurs with a sense of service to others, future generations and to the planet.

Humans are overloaded with information

We will develop learners who think critically, based on secure knowledge and understanding. We will enable them to apply insight and judge the significance and reliability of information.

The pace of global change is exponential

We will develop internationally-minded learners who appreciate differences and have a wide range of perspectives, ensuring they are adaptable, innovative, creative and can harness the power of digital technology.

A lack of employment skills

risks UK wealth and productivity. We will develop confident learners who have a positive can-do attitude and strong work ethic, able to collaborate and work as part of teams. We will focus on STEM and employer links to increase the flow of well-qualified young people entering the workplace.

Changes to the workplace

from the Covid pandemic combined with the impact of Brexit mean that our economy faces challenges for years to come. We will recruit and retain the best staff and build for succession in all key job roles so that our learners can thrive. We will deploy resources efficiently and sustainably by using our economies of scale to ensure continued investment in our academies.

The Digital Skills Gap



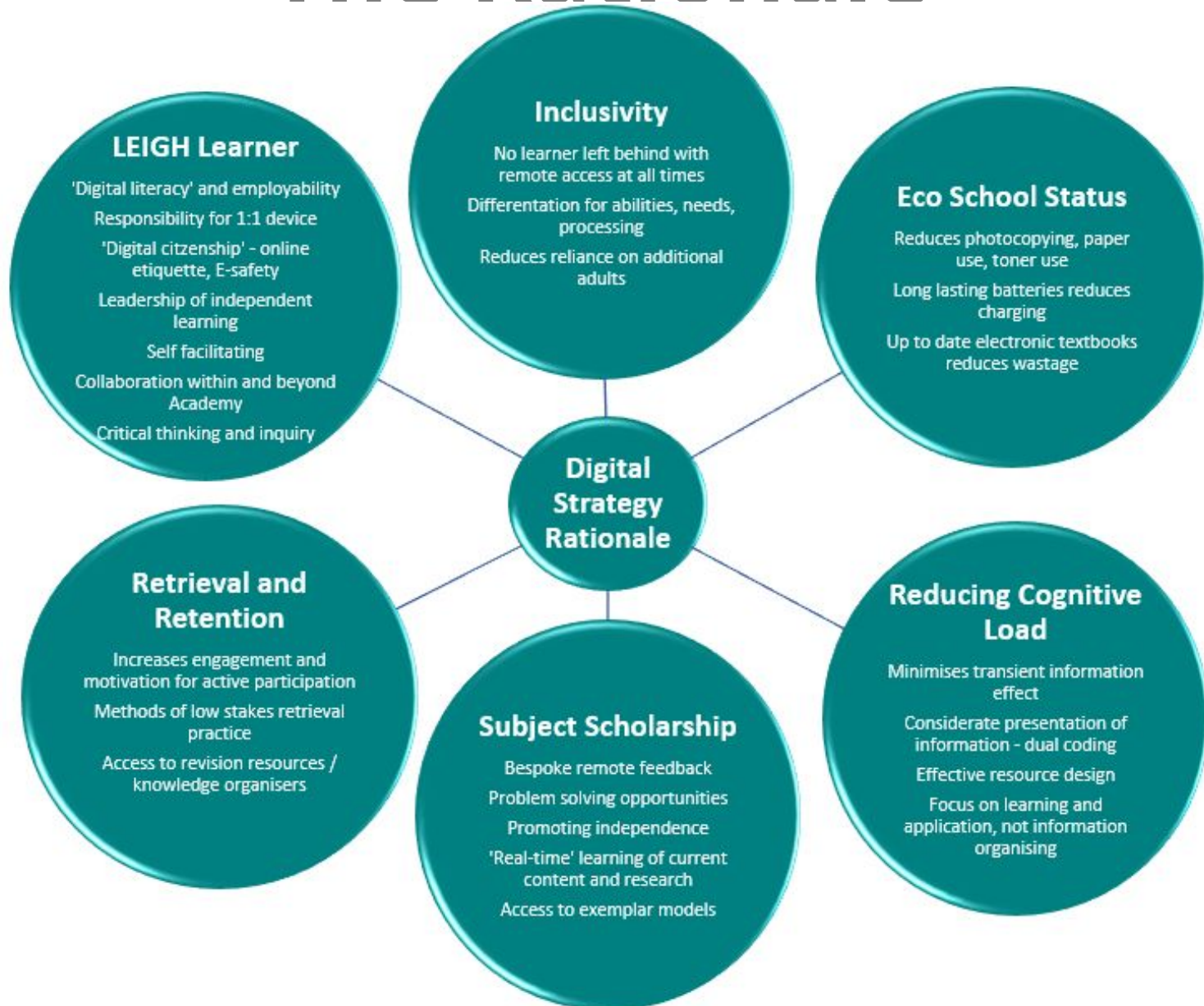
The Vision

- At Leigh Academy Rainham, technology will not replace traditional teaching methodologies but instead will augment, and elevate the way that new content and skills are delivered, providing a rich and diverse learning experience for our students.
- Technology will both bring the world into the classroom and transport students to any aspect of the globe they wish to explore; students of Leigh Academy Rainham will leave us as global citizens already feeling they have travelled the world.

The Vision

- It is the vision of both the Academy, and Leigh Academies Trust, to ensure that technology is not being used for technology's sake but being implemented in lessons through a meticulously planned approach to ensure its use is highly pertinent, varied and creative.
- Technology use will enhance the learning and progress students make as they journey through the curriculum, supplementing their learning with development of their digital skills and digital literacy.

The Rationale



Chromebooks in Education



ream
elieve
hieve

Digital Implementation

Chromebooks will be loaned to you by the Academy until students leave Year 11 with no expectation of payment from families. Every three years students are given an updated model.

It will be part of your child's compulsory 'equipment toolkit' that **will**

- Enhance their learning
- Enhance the strategies our teachers use
- Communicate homework and independent study
- Provide your child with resources to catch up on work or take their learning further
- Support additional learning needs



Digital Implementation

Chromebooks will ***not***

- ❑ ***replace*** exercise books
- ❑ ***replace*** opportunities or dedicated time to develop handwriting skills and freewriting
- ❑ ***replace*** the teacher as the main point of instruction and support
- ❑ ***replace*** written exams and milestones
- ❑ be used for engagement's sake, taking away from the learning



Dream
Believe
Achieve

Power of the Chromebook

What is a Chromebook?



Dream
Believe
Achieve

How they will be used

- Every class has a Google Classroom where classwork and homework tasks will be set
- The teacher will upload resources for lessons:
 - to allow for pre-learning or pre-reading
 - to allow students to move at a pace that is appropriate to them
 - to allow students to revisit slides after direct instruction from teacher
 - to enable students to revisit content at home for homework
 - to enable students to revisit prior lessons for revision



Dream
Believe
Achieve

How they will be used

- Digital textbooks in lessons
- Teachers may upload worksheets, tasks, extension tasks, alternative instructions to Google Classroom for lesson and home activities
- Teachers may provide opportunities for further inquiry based tasks, such as videos, youtube clips etc and these will be placed in the Google Classroom.

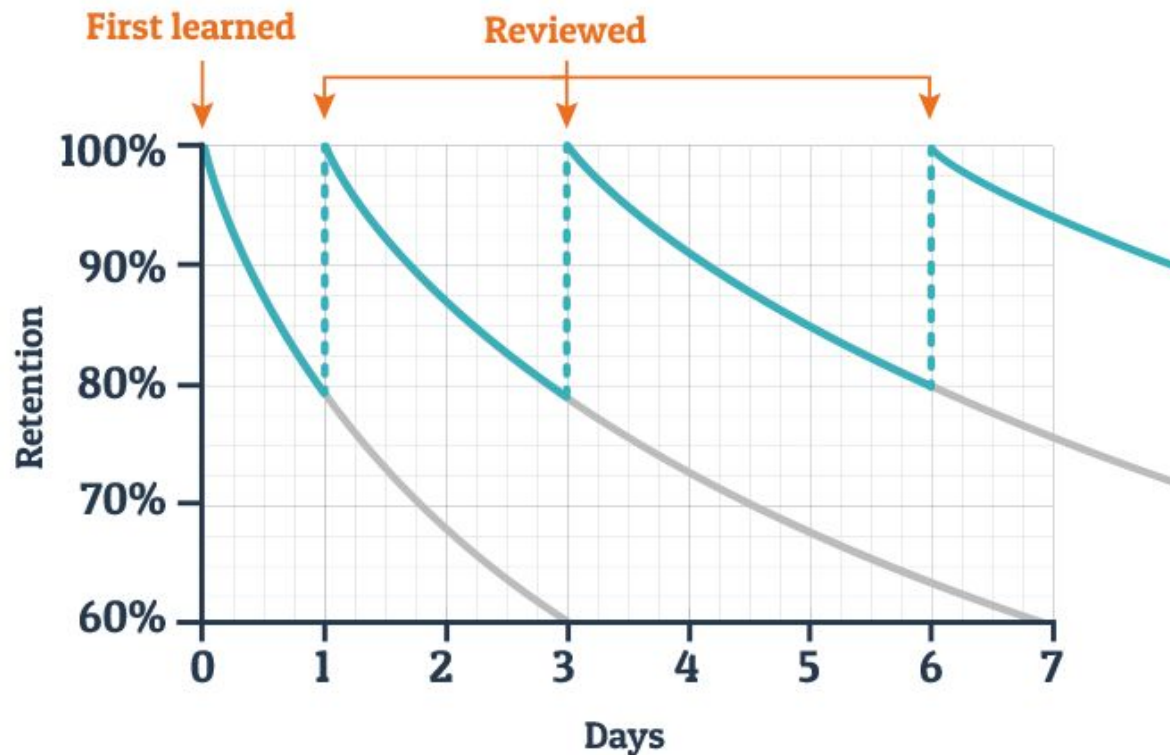


Dream
Believe
Achieve

Retrieval Practice

Regular Retrieval = Long Term Retention

Typical Forgetting Curve for Newly Learned Information



Student Agreement

This document outlines the permitted use of your loaned chromebook and all terms and conditions provided below must be followed in full. A breach of these terms may result in forfeit of the device or disciplinary action being taken.

1. All chromebooks remain the property of Freedom tech under the management of Leigh Academies Trust and are on loan to learners whilst they are on roll at Leigh Academies Trust.
2. The chromebook must be returned upon the Academy's request. The academy reserves the right to recall any device immediately should it feel the need to do so.
3. Learners are not permitted to accessorise their loaned chromebook.
4. All learners are reminded that they are not authorised to use their loaned chromebook to store personal sensitive information.
5. Learners are permitted to configure their home Wi-Fi network, however filtering in this instance will be regulated by the Wi-Fi supplier and parent/guardian.
6. Only official Google chromebook updates are permitted.
7. You are not permitted to circumvent any of the chromebook's in-built security measures.
8. It is imperative that only the learner's Google ID is to be used on the school device.
9. The use of illegally obtained software – this is all software that has not been validly purchased via Leigh Academies Trust – is not permitted.
10. The loaned chromebook must not be subjected to a 'Jailbreak' method in order to install uncertified apps. Any attempted 'Jailbreak' could result in total loss of data and the inability of the school to provide support. In such cases, the Chromebook is likely to be confiscated from the learner.
11. Use of the Chromebook for questionable activity including the deliberate viewing of inappropriate material via the internet is not permitted and a consequence will be put in place should this occur.

Student Agreement

12. Learners are not to undertake activities that contravene the Computer Misuse Act or Malicious Communications Act and Leigh Academies Trust's IT Acceptable Use Policy.

13. Learners must show due diligence in regard to the security of their loaned chromebook at all times. This includes times when they are not using the device.

14. When in a learning session users should only engage with those apps that support their learning. Consequences will apply for any learner using their chromebook inappropriately during learning sessions.

15. Should your chromebook stop working in any way you must not attempt any repairs either yourself or through any other means. The Chromebook must not be reset by anyone other than the LAT IT department.

16. The Chromebook is covered by accidental damage and theft insurance policy. Should a claim be made there could be an excess of £25 per claim at the discretion of Leigh Academies Trust.

17. The academy administrator will log and manage the insurance claim. Insurance claims should be made directly with Freedom Technology who will manage the claim on the site's behalf.

18. Should an insurance claim be made it may take up to two weeks for the return of the repaired or a replacement device. A loaned spare device will be provided in the meantime and the same terms and conditions will apply to this loaned device .

19. In order to process an insurance claim, the name of your child will be provided to the insurance company along with the serial number of the allocated device.

20. Chargers are not included in the main management of the device. Replacement chargers will be made available to purchase through ParentPay/Wisepay. Low income/disadvantaged students will be covered by Pupil Premium funding.



Dream
Believe
Achieve

Inappropriate Use

Offence	Consequence
Distraction within the classroom	<ul style="list-style-type: none"> ● CR - First reminder of consequence ● C1 - Screen laid flat and 30 minute detention ● C2 - 60 minute detention and exit if necessary
Not bringing chromebook to the Academy	<ul style="list-style-type: none"> ● 1st incident- C1 30 minute detention ● 2nd incident- C2 60 minute detention ● 3rd incident - C3 SLT detention
Accessing inappropriate sites including social media, chat rooms or gaming sites	<ul style="list-style-type: none"> ● Investigate - C3 SLT detention or internal exclusion referral depending on seriousness ● Internet ban for agreed period of time
Anti-social online behaviour: harassment, intimidation or bullying via chromebooks will be dealt with in line with the Academy behaviour policy.	<ul style="list-style-type: none"> ● Investigate -C3 SLT detention or internal exclusion referral depending on seriousness ● Internet ban for agreed period of time
Graffiti / Personalisation of chromebook	<ul style="list-style-type: none"> ● Minimum 1 day internal exclusion depending on extent of damage
Purposeful physical damage to Chromebook e.g removing keys	<ul style="list-style-type: none"> ● Minimum 2 days internal exclusion depending on extent of damage

How are we keeping children safe?

- ❑ All student work will be kept on Google Drive - USB Storage Devices will not work on Chromebooks.
- ❑ All Google Classrooms and Chromebooks are locked to LAR so there is no external access by unknown users.
- ❑ All apps and extensions will be pre-loaded onto the Chromebook. Permissions are set so that students are unable to download any additional apps or visit inappropriate sites.
- ❑ Anti-virus and malware prevention is already pre-installed as part of the Chrome OS.



Dream
Believe
Achieve

What to do if it stops working

- Do not attempt to repair or reset the chromebook if it stops working in any way
- Report any technical problems to your Form Tutor in the first instance, following this to your Student Services Manager
- Immediately report any damage, loss or theft which happens in the Academy to a member of staff.
- You will be loaned a Chromebook on a daily basis while it is repaired
- Your chargers are not included in the main management of the device. If you lose or damage your charger you will be required to purchase a replacement charger through ParentPay.



Dream
Believe
Achieve

What next?

- All students must have their Chromebook with them every day from **Tuesday 20th September 2022**
- Teachers will be understanding of the fact that some students may have never used a Chromebook before and that students will be learning how to use these together.
- The Computing lessons will be teaching students how to use the Google Suite and how to keep themselves safe online
- Use the website link below and the video on the next slide to learn how to use the Chromebook and for future technical guidance

[Chromebooks in Education](#)



Getting Started!

Getting Started



chromebook

Dream
Believe
achieve

Academic Honesty - What is my role as an IB parent?

- **Plagiarism:** ‘the practice of taking someone else's work or ideas and passing them off as one's own.’
- **Collusion:** allowing one’s work to be copied or submitted for assessment by another
- **Duplication of work:** the presentation of the same work for different assessments
- **Cheating:** ‘acting dishonestly or unfairly in order to gain an advantage.’ This can be identified as:



Dream
Believe
Achieve

Academic Honesty - What is my role as an IB parent?

- Reading, signing and returning a copy of the Academic Honesty Policy
- Actively fostering an understanding of right and wrong.
 - Who's words are these? Do you need to cite anyone?
- Ensuring that your support does not extend to completing work for them
- Promoting and supporting students in accessing a range of sources including websites, library books and academic publications
- To support teachers in any consequences stemming from cheating or plagiarism



DREAM
Believe
Achieve

Chromebook Distribution

- Please enter the Dining Hall and find the relevant table for distribution. This will be organised by College (Kingsley with Mr Sandland, Angelou with Mrs Plant and Turing with Mr Blinkhorn)
- Please stay seated if you have yet to complete the online safety training as we will play the 5 minute video for you now.
- Please have your 'Loan Agreement' form ready with you to hand over at the distribution point.

Thank you for coming!



Dream
Believe
Achieve